



נפש  
ב'Nefesh



# Lone Soldiers Program

Aliyah and the IDF



[lspen@nbn.org.il](mailto:lspen@nbn.org.il)

# NEFESH B'NEFESH



“Nefesh B’Nefesh in cooperation with the Israeli government and The Jewish Agency for Israel, is dedicated to revitalizing Aliyah from the USA and Canada by removing or minimizing the financial, professional, logistical and social obstacles of Aliyah and the move to Israel.”

IDF Disclaimer: The role of Nefesh B’Nefesh and its partners is to assist new immigrants to Israel who are drafted to the IDF. It is not the objective, or part of the scope of operational activities of the organization or its partners to help recruit soldiers for the Israel Defense Forces.

# MEET THE LSP TEAM



**Noya Govrin**  
Program Director



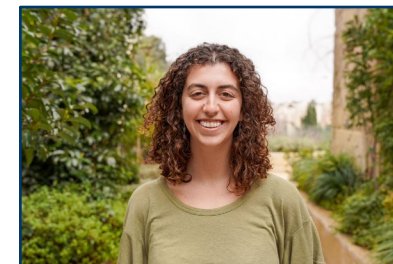
**Hila Buzaglo**  
Program Consultant



**Avi Ziv**  
Program Consultant



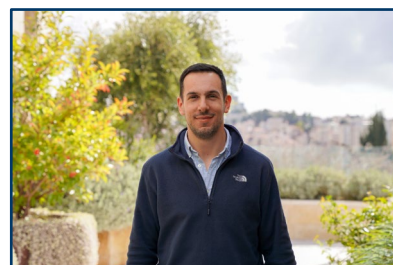
**Ban Yablon**  
Byablon@nbn.org.il



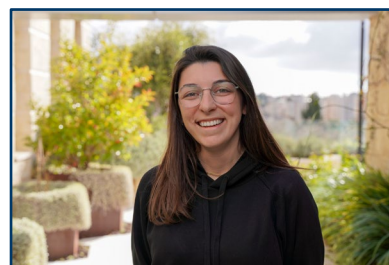
**Samantha Agranoff**  
sagronoff@nbn.org.il



**Natalie Ozeri**  
nozeri@nbn.org.il



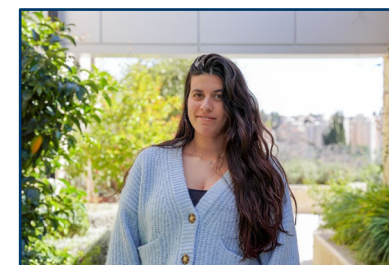
**Federico Winarz**  
fwinarz@nbn.org.il



**Asya Kyselyova**  
akyselyova@nbn.org.il



**Seva Gamidi**  
sgamidi@nbn.org.il











**Laura Roudine**  
lroudine@nbn.org.il



# WHAT WE WILL TALK ABOUT

- Who we are?
- How long is my service requirement?
- Timeline from Aliyah date to draft date?
- Tzav Rishon
- IDF Drafting Programs

# UNIQUE NBN/FIDF LONE SOLDIERS PROGRAM

-  24 / 7 Hotline - \*6563
-  Contractual Relationship with IDF
-  Financial Assistance
-  Advocacy – Connected to every Gov. Ministry
-  Parents Connection and Support
-  Support soldiers during Iron Swords
-  Social Events and Programming
-  Post Army Counseling - Employment and Education (job board, network, mentors)





# WHO HAS A SERVICE REQUIREMENT

- What is the age of arrival?
- Why is it important?
- How is it determined?

# IDF DRAFT – AGE OF ARRIVAL

| Age of Arrival                      | 18-19     | 20        | 21        | 22-27<br>(Exempt can request to volunteer)          | 28  |
|-------------------------------------|-----------|-----------|-----------|---|---|
| Single Male                         | 32 Months | 24 Months | 24 Months | Non<br>Combat: 18<br>Months<br>Combat: 24<br>Months | Exempt/ not<br>eligible for<br>volunteer<br>service |
| Single Female (all Aliyah statuses) | 24 Months | 24 Months | 24 Months | Non<br>Combat: 18<br>Months<br>Combat: 24<br>Months | Exempt/ not<br>eligible for<br>volunteer<br>service |

\* Different rules and regulations apply to married people and medical professions.

# 22-27 YEARS OLD AGE OF ARRIVAL

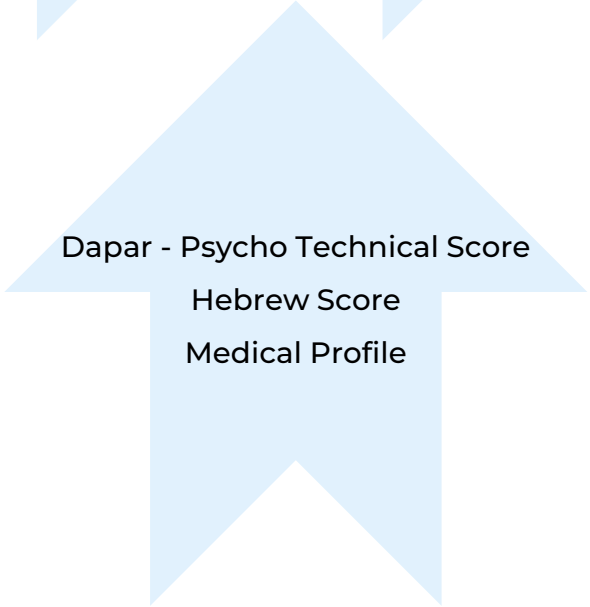
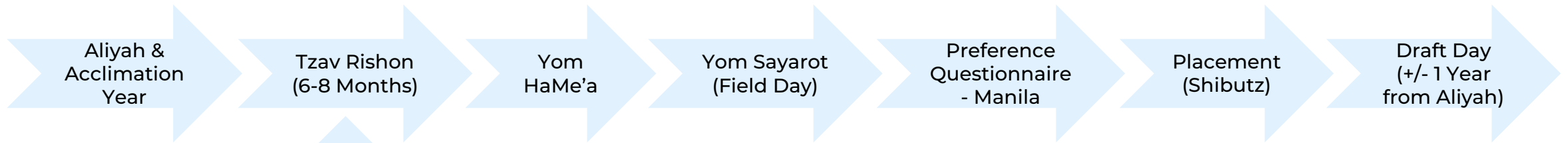
Those who arrive to Israel at the age 22 and above do not have a mandatory service requirement. Those that are interested in drafting to the IDF must submit a request and the army will review their eligibility.

\* Different rules and regulations apply to married people and medical professions.

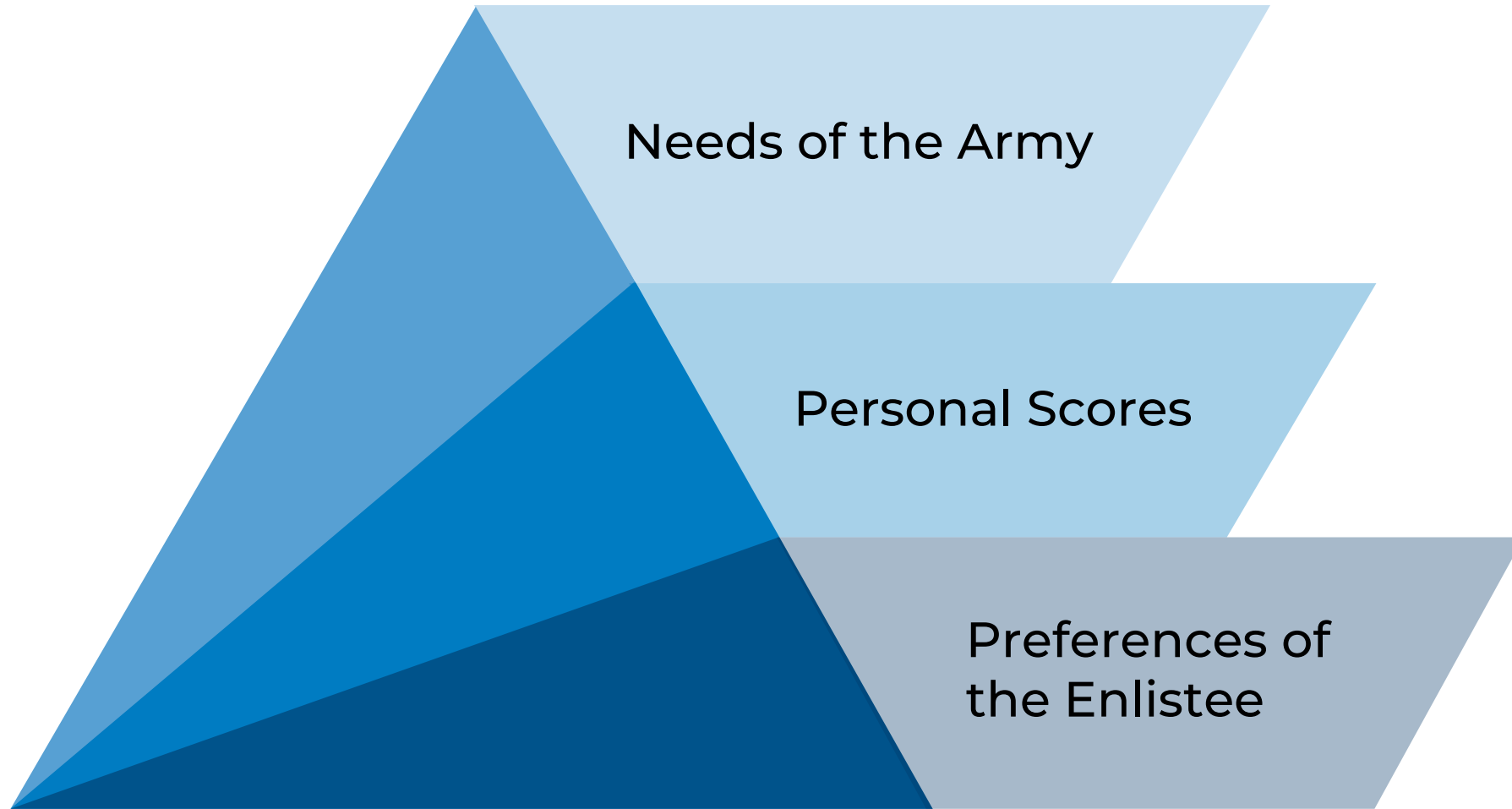




# TIMELINE & CLASSIFICATION PROCESS



# PRINCIPLES OF PLACEMENT





# LONE SOLDIERS RIGHTS & BENEFITS

# RIGHTS & BENEFITS - IDF



Meuchedet



Mim un Tisa\*



HOUSING



PARENT VISITS



YOM SIDDURIM

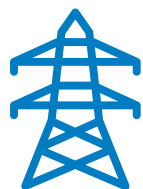


SALARY

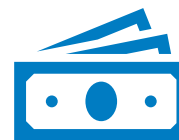


MOVING  
ASSISTANCE

# RIGHTS & BENEFITS - GOVERNMENT



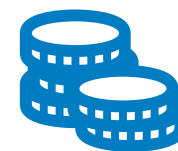
ELECTRICITY BILL



MISRAD HABINUI



ARNONA DISCOUNT



MISRAD HAKLITA

# HOUSING



KIBBUTZ



BET HACHAYAL



RENTAL



"ALACH"  
APARTMENTS



ADOPTIVE FAMILY



HABAIT SHEL  
BENJI / Michael  
Levin Housing

# IDF PROGRAMS



Atudat Olim  
Akademizatzia

Mahal  
Garin Tzabar

Religious Tracks

# PARENTS OF LONE SOLDIERS



Webinars & Seminars



E-MAIL:

[lonesoldierparents@nbn.org.il](mailto:lonesoldierparents@nbn.org.il)



NEWSLETTER



PARENTS HOTLINE:

Abroad: +1 201-605-7440



# IMPORTANT CONTACTS

## Emails

lspen@nbn.org.il

Lonesoldierparents@nbn.org.il

## Hotline for Parents

+1-201-605-7440

## Hotline for Soldiers

\*6563

## Merkaz Bodedim IDF

Phone (Israel): 03-569-1000 Ext. 2

Whatsapp: +972-52-943-7725

Email: me.bodedim@mail.idf.il

## Public Inquiries (Pinot Zibur)

Hotline: +972-73-372-0020

Email: 1111@idf.gov.il

## Meitav Moked Olim – HR Unit

### Division for New Immigrants

Email Israel: joinidf@digital.idf.il

Email Abroad: meitav@newyork.mfa.gov.il

Whatsapp: +927-52-945-8579





נפש Nefesh  
בנפש B'Nefesh

**THANK YOU!**

[lspen@nbn.org.il](mailto:lspen@nbn.org.il)